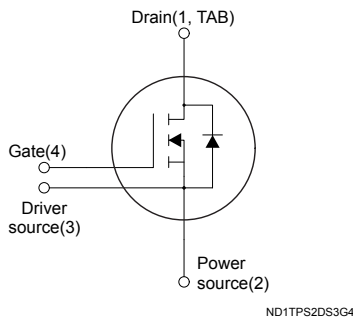
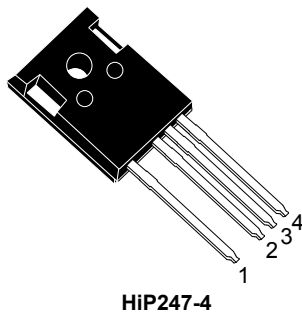


## Silicon carbide Power MOSFET 650 V, 18 mΩ typ., 119 A in an HiP247-4 package



## Features

Order code	V <sub>DS</sub>	R <sub>DS(on)</sub> max.	I <sub>D</sub>
SCTWA90N65G2V-4	650 V	24 mΩ	119 A

- High speed switching performance
- Very high operating junction temperature capability (T<sub>J</sub> = 200 °C)
- Very fast and robust intrinsic body diode
- Extremely low gate charge and input capacitances
- Source sensing pin for increased efficiency

## Applications

- Switching mode power supply
- DC-DC converters
- Industrial motor control

## Description

This silicon carbide Power MOSFET device has been developed using ST's advanced and innovative 2<sup>nd</sup> generation SiC MOSFET technology. The device features remarkably low on-resistance per unit area and very good switching performance. The variation of switching loss is almost independent of junction temperature.

## Product status link

[SCTWA90N65G2V-4](#)

## Product summary

Order code	SCTWA90N65G2V-4
Marking	SCT90N65G2V
Package	HiP247-4
Packing	Tube

# 1 Electrical ratings

**Table 1. Absolute maximum ratings**

Symbol	Parameter	Value	Unit
$V_{DS}$	Drain-source voltage	650	V
$V_{GS}$	Gate-source voltage	-10 to 22	V
	Gate-source voltage (recommended operating values)	-5 to 18	
$I_D$	Drain current (continuous) at $T_C = 25\text{ °C}$	119	A
	Drain current (continuous) at $T_C = 100\text{ °C}$	90	
$I_{DM}^{(1)}$	Drain current (pulsed)	220	A
$P_{TOT}$	Total power dissipation at $T_C = 25\text{ °C}$	565	W
$T_{stg}$	Storage temperature range	-55 to 200	°C
$T_j$	Operating junction temperature range		°C

1. Pulse width is limited by safe operating area.

**Table 2. Thermal data**

Symbol	Parameter	Value	Unit
$R_{thJC}$	Thermal resistance, junction-to-case	0.31	°C/W
$R_{thJA}$	Thermal resistance, junction-to-ambient	40	°C/W

## 2 Electrical characteristics

( $T_{CASE} = 25\text{ °C}$  unless otherwise specified).

**Table 3. On/off states**

Symbol	Parameter	Test conditions	Min.	Typ.	Max.	Unit
$V_{(BR)DSS}$	Drain-source breakdown voltage	$V_{GS} = 0\text{ V}, I_D = 1\text{ mA}$	650			V
$I_{DSS}$	Zero gate voltage drain current	$V_{DS} = 650\text{ V}, V_{GS} = 0\text{ V}$			10	$\mu\text{A}$
$I_{GSS}$	Gate-body leakage current	$V_{DS} = 0\text{ V}, V_{GS} = -10\text{ to }22\text{ V}$			$\pm 100$	nA
$V_{GS(th)}$	Gate threshold voltage	$V_{DS} = V_{GS}, I_D = 1\text{ mA}$	1.9	3.2	5.0	V
$R_{DS(on)}$	Static drain-source on-resistance	$V_{GS} = 18\text{ V}, I_D = 50\text{ A}$		18	24	m $\Omega$
		$V_{GS} = 18\text{ V}, I_D = 50\text{ A}, T_J = 200\text{ °C}$		30		

**Table 4. Dynamic, based on HiP247 package option**

Symbol	Parameter	Test conditions	Min.	Typ.	Max.	Unit
$C_{iss}$	Input capacitance	$V_{DS} = 400\text{ V}, f = 1\text{ MHz}, V_{GS} = 0\text{ V}$	-	3380	-	pF
$C_{oss}$	Output capacitance		-	294	-	
$C_{riss}$	Reverse transfer capacitance		-	49	-	
$Q_g$	Total gate charge	$V_{DD} = 400\text{ V}, I_D = 50\text{ A},$ $V_{GS} = -5\text{ V to }18\text{ V}$	-	157	-	nC
$Q_{gs}$	Gate-source charge		-	43	-	
$Q_{gd}$	Gate-drain charge		-	42	-	
$R_g$	Gate input resistance	$f = 1\text{ MHz}, I_D = 0\text{ A}$	-	1	-	$\Omega$

**Table 5. Switching energy (inductive load), based on HiP247 package option**

Symbol	Parameter	Test conditions	Min.	Typ.	Max.	Unit
$E_{on}$	Turn-on switching energy	$V_{DD} = 400\text{ V}, I_D = 50\text{ A}, R_G = 2.2\text{ }\Omega,$ $V_{GS} = -5\text{ to }18\text{ V}$	-	130	-	$\mu\text{J}$
$E_{off}$	Turn-off switching energy		-	210	-	
$E_{on}$	Turn-on switching energy	$V_{DD} = 400\text{ V}, I_D = 50\text{ A}, R_G = 2.2\text{ }\Omega,$ $V_{GS} = -5\text{ to }18\text{ V}, T_J = 200\text{ °C}$	-	135	-	
$E_{off}$	Turn-off switching energy		-	200	-	

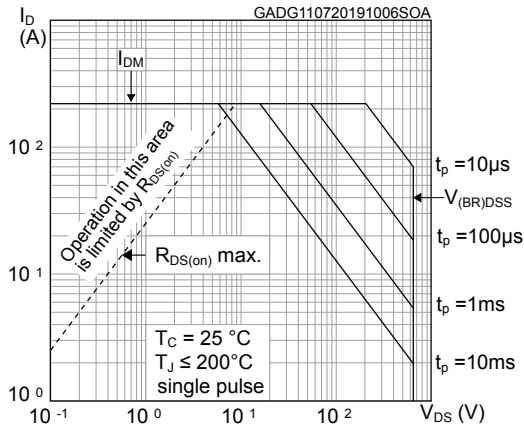
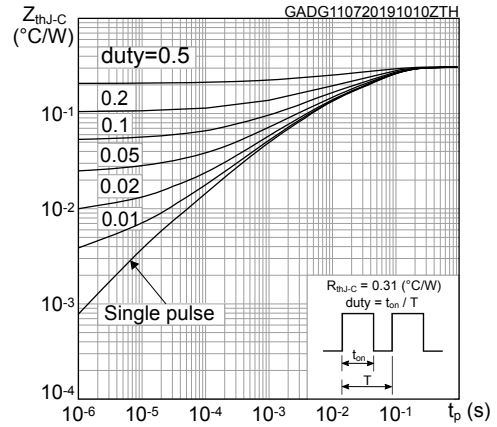
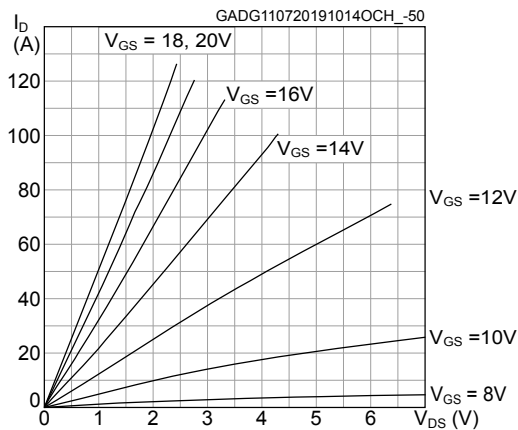
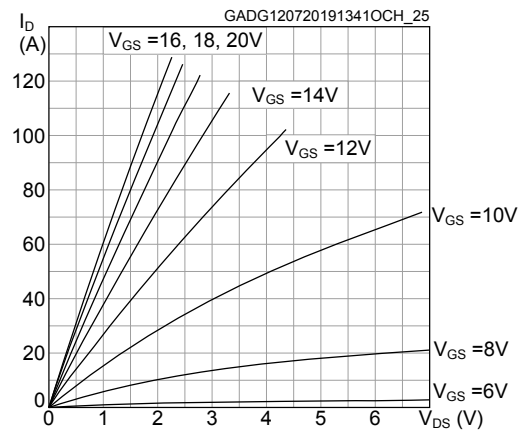
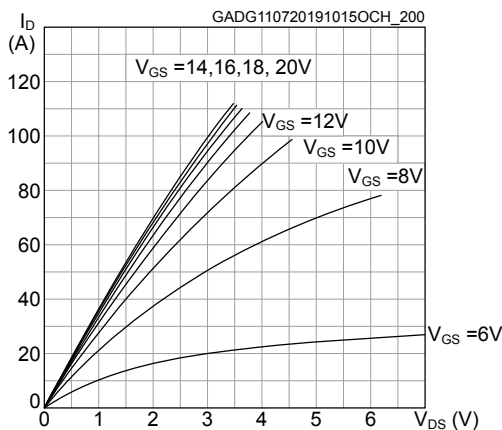
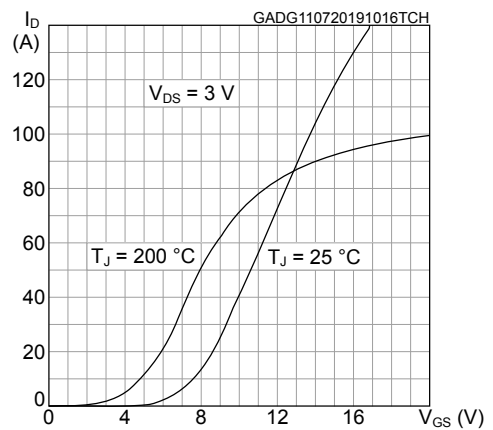
**Table 6. Switching times, based on HiP247 package option**

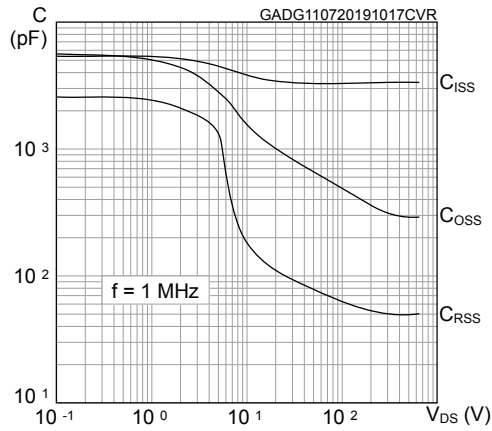
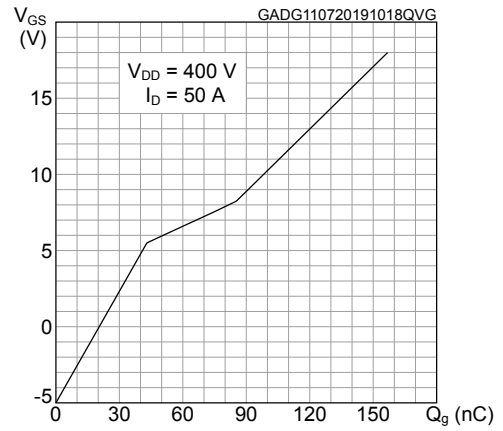
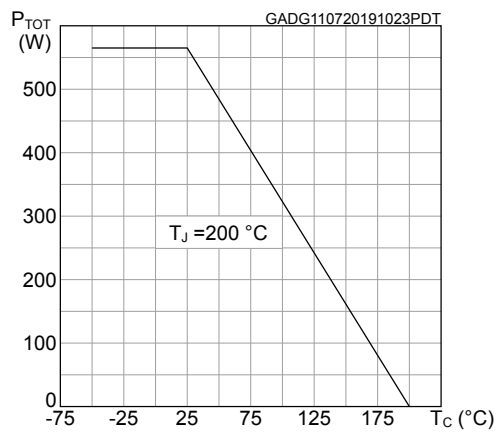
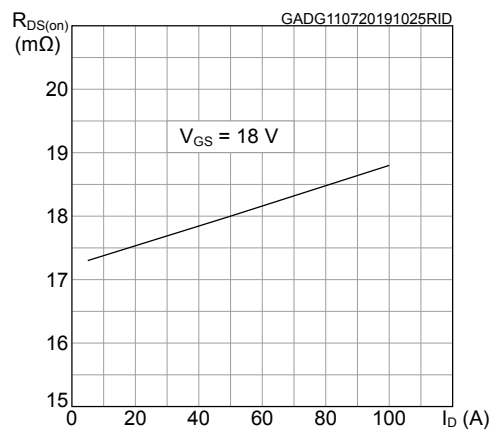
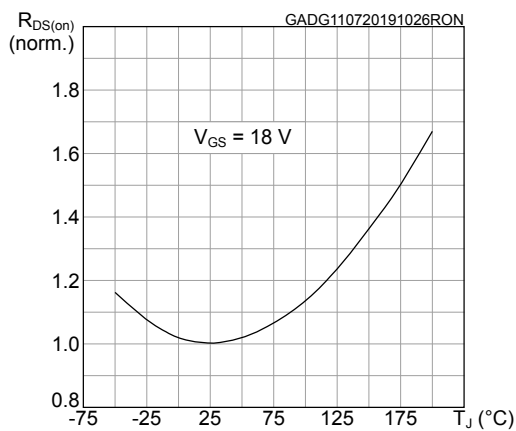
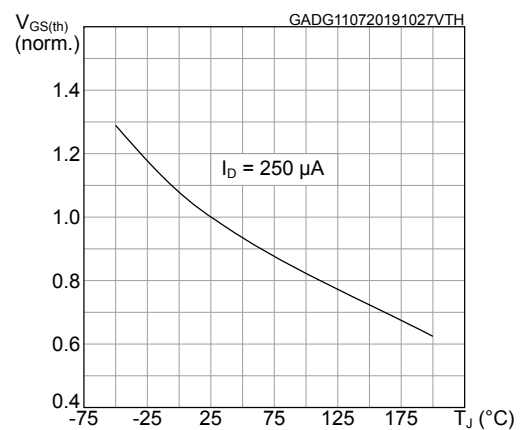
Symbol	Parameter	Test conditions	Min.	Typ.	Max.	Unit
$t_{d(on)}$	Turn-on delay time	$V_{DD} = 400\text{ V}$ , $I_D = 50\text{ A}$ , $R_G = 2.2\ \Omega$ , $V_{GS} = -5\text{ V to } 18\text{ V}$ ,	-	26	-	ns
$t_f$	Fall time		-	16	-	
$t_{d(off)}$	Turn-off delay time		-	58	-	
$t_r$	Rise time		-	38	-	

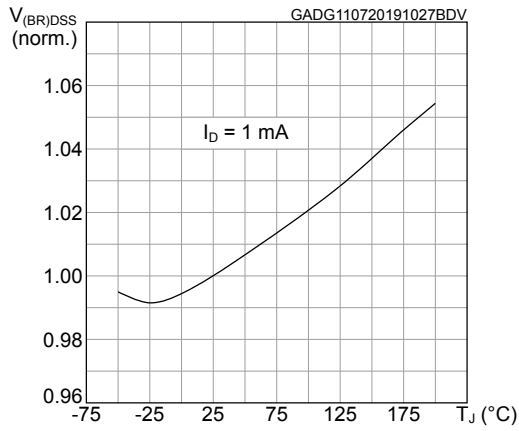
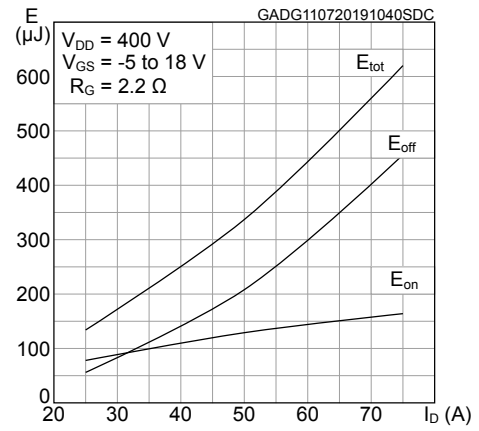
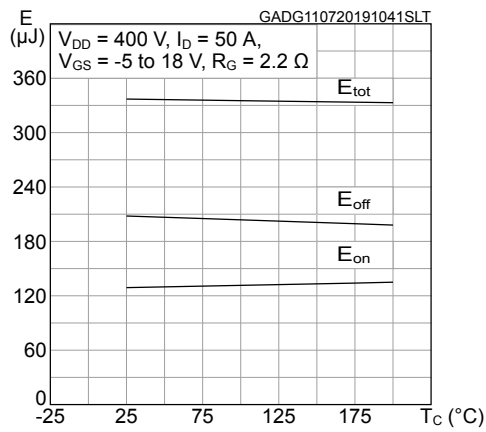
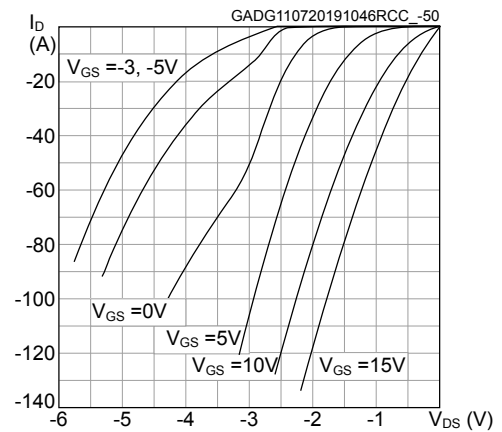
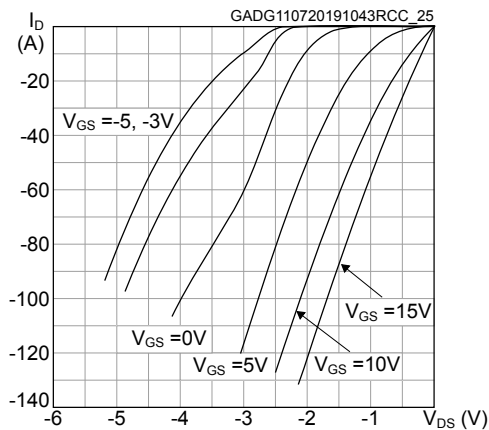
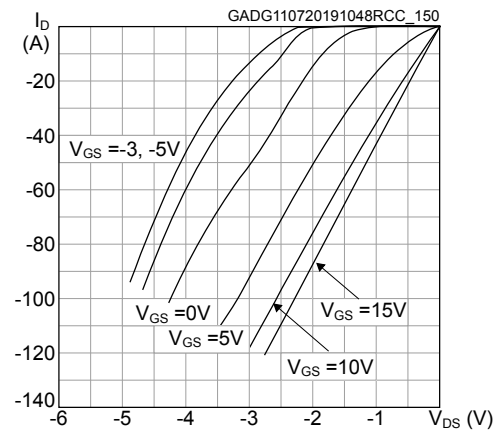
**Table 7. Reverse SiC diode characteristics, based on HiP247 package option**

Symbol	Parameter	Test conditions	Min.	Typ.	Max.	Unit
$V_{SD}$	Forward on voltage	$I_F = 30\text{ A}$ , $V_{GS} = 0\text{ V}$	-	2.5	-	V
$t_{rr}$	Reverse recovery time	$I_F = 50\text{ A}$ , $di/dt = 4000\text{ A}/\mu\text{s}$ ,	-	17	-	ns
$Q_{rr}$	Reverse recovery charge	$V_{GS} = V_{GS} = -5\text{ V to } 18\text{ V}$ ,	-	308	-	nC
$I_{RRM}$	Reverse recovery current	$V_{DD} = 400\text{ V}$ , $T_J = 25\text{ }^\circ\text{C}$	-	30	-	A

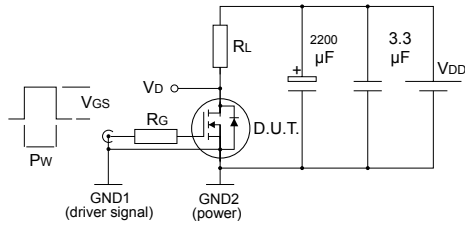
## 2.1 Electrical characteristics (curves), based on HiP247 package option

**Figure 1. Safe operating area**

**Figure 2. Maximum transient thermal impedance**

**Figure 3. Typical output characteristics ( $T_J = -50\text{ }^\circ\text{C}$ )**

**Figure 4. Typical output characteristics ( $T_J = 25\text{ }^\circ\text{C}$ )**

**Figure 5. Typical output characteristics ( $T_J = 200\text{ }^\circ\text{C}$ )**

**Figure 6. Typical transfer characteristics**


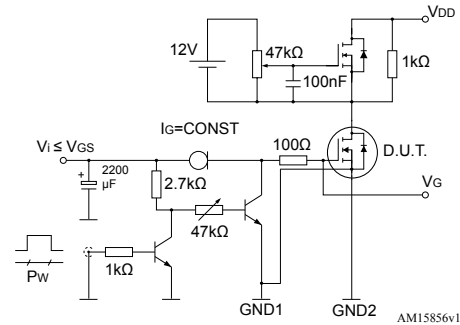
**Figure 7. Typical capacitances**

**Figure 8. Typical gate charge**

**Figure 9. Maximum total power dissipation**

**Figure 10. Typical drain-source on-resistance**

**Figure 11. Normalized on-resistance vs temperature**

**Figure 12. Normalized gate threshold voltage vs temperature**


**Figure 13. Normalized breakdown voltage vs temperature**

**Figure 14. Typical switching energy vs drain current**

**Figure 15. Typical switching energy vs temperature**

**Figure 16. Typical reverse conduction characteristics (Tj = -50 °C)**

**Figure 17. Typical reverse conduction characteristics (Tj = 25 °C)**

**Figure 18. Typical reverse conduction characteristics (Tj = 150 °C)**


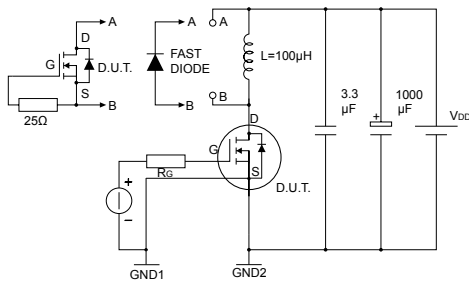
### 3 Test circuits

**Figure 19. Switching times test circuit for resistive load**


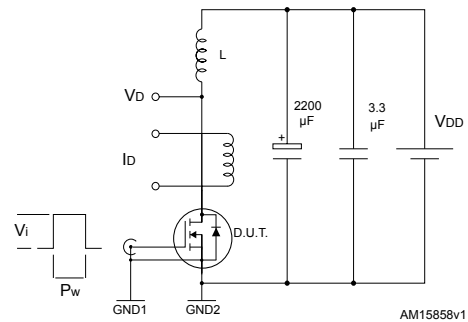
AM15855v1

**Figure 20. Test circuit for gate charge behavior**


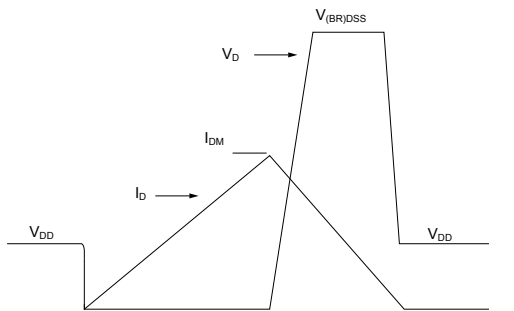
AM15856v1

**Figure 21. Test circuit for inductive load switching and diode recovery times**


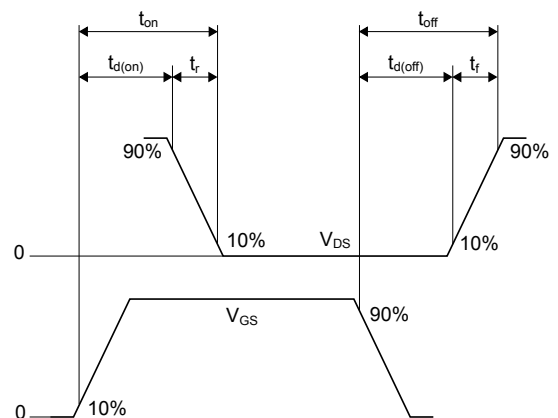
AM15857v1

**Figure 22. Unclamped inductive load test circuit**


AM15858v1

**Figure 23. Unclamped inductive waveform**


AM01472v1

**Figure 24. Switching time waveform**


AM01473v1

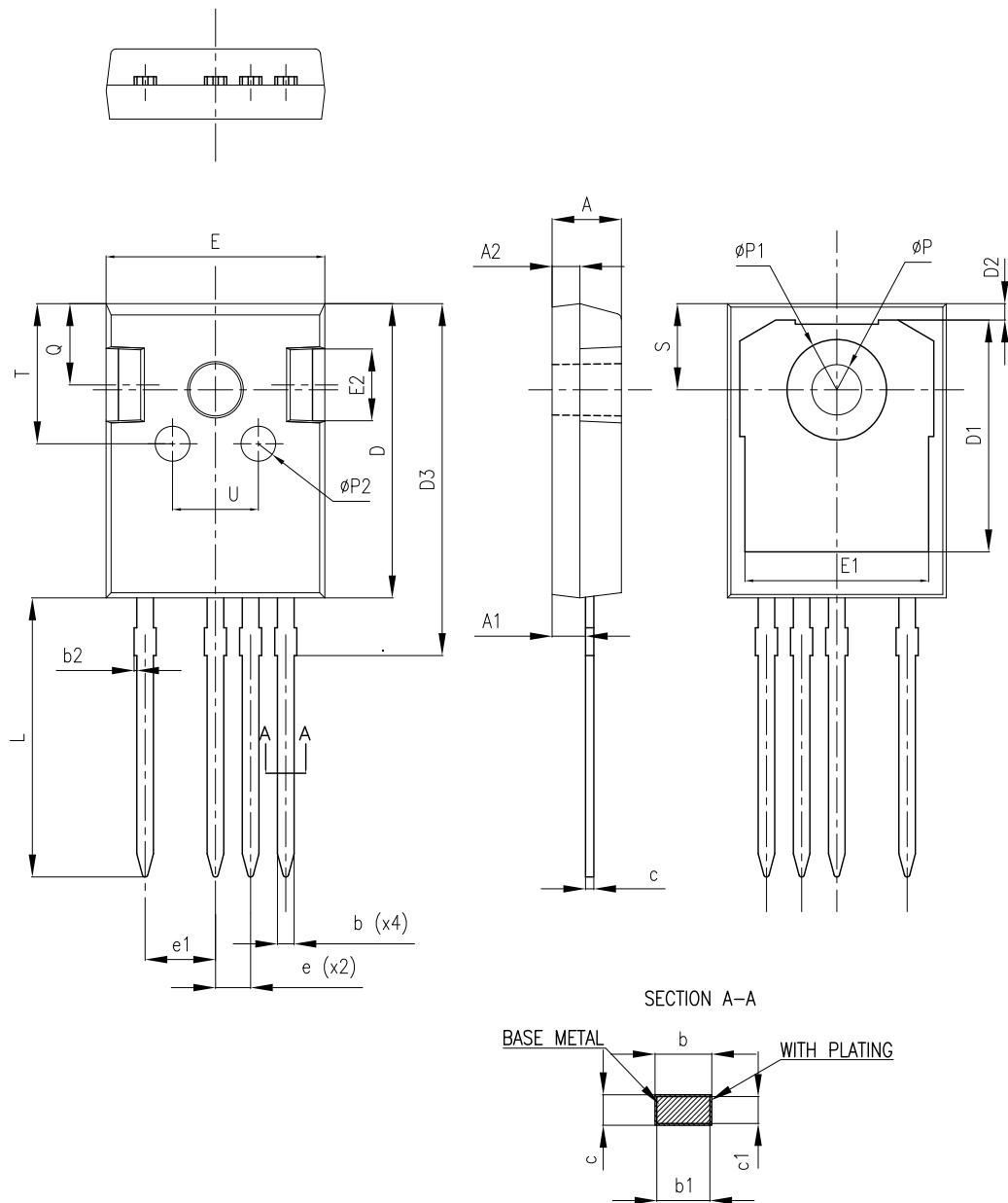


## 4 Package information

In order to meet environmental requirements, ST offers these devices in different grades of **ECOPACK** packages, depending on their level of environmental compliance. ECOPACK specifications, grade definitions and product status are available at: [www.st.com](http://www.st.com). ECOPACK is an ST trademark.

### 4.1 HiP247-4 package information

Figure 25. HiP247-4 package outline



8405626\_2

**Table 8. HiP247-4 mechanical data**

Dim.	mm		
	Min.	Typ.	Max.
A	4.90	5.00	5.10
A1	2.31	2.41	2.51
A2	1.90	2.00	2.10
b	1.16		1.29
b1	1.15	1.20	1.25
b2	0		0.20
c	0.59		0.66
c1	0.58	0.60	0.62
D	20.90	21.00	21.10
D1	16.25	16.55	16.85
D2	1.05	1.20	1.35
D3	24.97	25.12	25.27
E	15.70	15.80	15.90
E1	13.10	13.30	13.50
E2	4.90	5.00	5.10
E3	2.40	2.50	2.60
e	2.44	2.54	2.64
e1	4.98	5.08	5.18
L	19.80	19.92	20.10
P	3.50	3.60	3.70
P1			7.40
P2	2.40	2.50	2.60
Q	5.60		6.00
S		6.15	
T	9.80		10.20
U	6.00		6.40

## Revision history

**Table 9. Document revision history**

Date	Revision	Changes
25-Nov-2020	1	First release.

---

## Contents

<b>1</b>	<b>Electrical ratings</b> .....	<b>2</b>
<b>2</b>	<b>Electrical characteristics</b> .....	<b>3</b>
<b>2.1</b>	Electrical characteristics (curves), based on HiP247 package option .....	5
<b>3</b>	<b>Test circuits</b> .....	<b>8</b>
<b>4</b>	<b>Package information</b> .....	<b>9</b>
<b>4.1</b>	HiP247-4 package information .....	9
	<b>Revision history</b> .....	<b>11</b>

**IMPORTANT NOTICE – PLEASE READ CAREFULLY**

STMicroelectronics NV and its subsidiaries (“ST”) reserve the right to make changes, corrections, enhancements, modifications, and improvements to ST products and/or to this document at any time without notice. Purchasers should obtain the latest relevant information on ST products before placing orders. ST products are sold pursuant to ST’s terms and conditions of sale in place at the time of order acknowledgement.

Purchasers are solely responsible for the choice, selection, and use of ST products and ST assumes no liability for application assistance or the design of Purchasers’ products.

No license, express or implied, to any intellectual property right is granted by ST herein.

Resale of ST products with provisions different from the information set forth herein shall void any warranty granted by ST for such product.

ST and the ST logo are trademarks of ST. For additional information about ST trademarks, please refer to [www.st.com/trademarks](http://www.st.com/trademarks). All other product or service names are the property of their respective owners.

Information in this document supersedes and replaces information previously supplied in any prior versions of this document.

© 2020 STMicroelectronics – All rights reserved