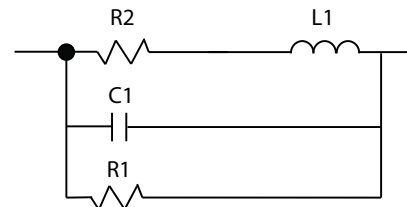


# SPICE-Equivalent circuit model library

**Table 1.** Equivalent circuit data

Part Number	L ( $\mu$ H)	F <sub>res</sub> (MHz)	C1 (pF)	R1 ( $\Omega$ )	R2 Nominal DCR of winding ( $\Omega$ )
HCMA0503-R20-R	0.2	187.0	3.62	5052.12	0.002
HCMA0503-R35-R	0.35	132.9	4.10	5577.22	0.0039
HCMA0503-R47-R	0.47	111.1	4.37	5875.45	0.0065
HCMA0503-R75-R	0.75	83.5	4.84	6381.23	0.0085
HCMA0503-1R0-R	1	70.1	5.16	6714.00	0.01
HCMA0503-1R5-R	1.5	54.7	5.64	7212.68	0.017
HCMA0503-2R2-R	2.2	43.3	6.14	7717.69	0.023
HCMA0503-3R3-R	3.3	33.8	6.71	8290.92	0.036
HCMA0503-4R7-R	4.7	27.3	7.25	8825.53	0.054
HCMA0503-5R6-R	5.6	24.5	7.54	9103.03	0.063
HCMA0503-6R8-R	6.8	21.8	7.87	9420.75	0.091
HCMA0503-100-R	10	17.2	8.56	10085.13	0.122
HCMA0503-150-R	15	13.4	9.36	10834.20	0.138
HCMA0503-220-R	22	10.6	10.18	11592.78	0.26



**Figure 1.** Equivalent circuit

## Disclaimer

The data provided is for reference and is intended for evaluation purposes only. Users should verify all intended results in the end application.

**Eaton**  
**Electronics Division**  
 1000 Eaton Boulevard  
 Cleveland, OH 44122  
 United States  
[www.eaton.com/electronics](http://www.eaton.com/electronics)

© 2018 Eaton  
 All Rights Reserved  
 Printed in USA  
 Publication No. HCMA0503 Spice  
 April 2018