



DEVICE SERVER
MODULE



DIGI CONNECT ME

Secure device server module with plug-and-play functionality and professional development tools for custom applications

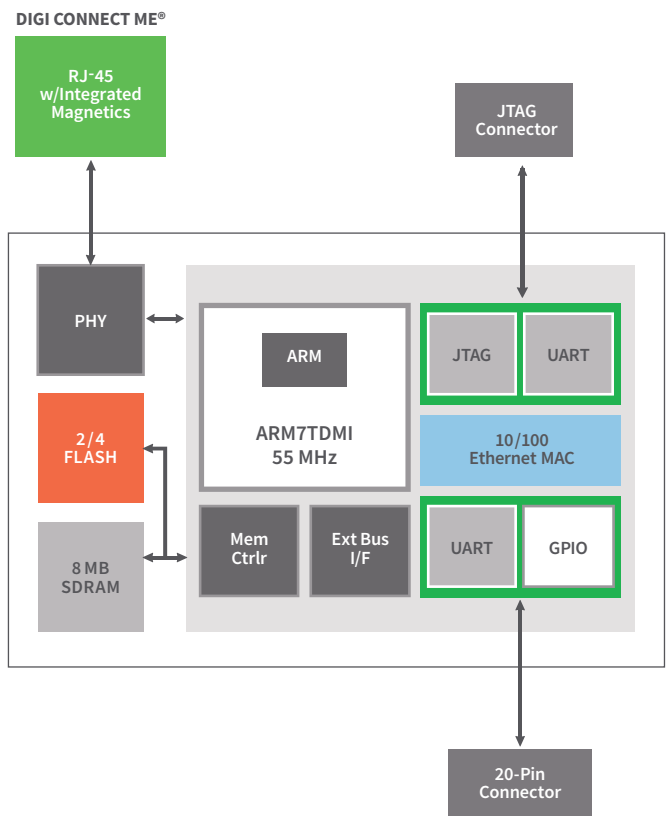
The Digi Connect ME is a secure device server module that delivers complete and versatile embedded IPv6-ready network connectivity and strong standards-based encryption services such as SSL/SSH. Built on leading Digi 32-bit NET+ARM technology, the Digi Connect ME is cost effective and easy to use in existing and new product designs, while powerful enough to meet future product performance needs. The connector-style module is pin-compatible and interchangeable with the Digi Connect® Wi-ME, providing a direct migration path to a wireless solution without the traditional complexities of hardware and software integration work.

Digi Connect ME is available pre-loaded with Digi plug-and-play firmware, which eliminates software development efforts by providing powerful and configurable IPv4/IPv6 device server functionality, including an easy-to-use web user interface and security features. Target applications include retail systems, security/access control, medical devices and building/industrial automation.

BENEFITS

- Compact and secure 32-bit device server modules
- Complete family of pin-compatible module solutions
- Integrated 10/100 Mbit Ethernet interface
- Strong enterprise-grade network security
- Highly integrated low emission design (FCC Class B)
- Extended and industrial operating temperature
- Digi processor and WLAN technology for true long-term availability

BLOCK DIAGRAM



RELATED PRODUCTS



SPECIFICATIONS

Digi Connect ME®

HARDWARE

PROCESSOR TYPE	32-bit Digi NS7520 processor
ARM CORE	ARM7TDMI
PROCESSOR SPEED	55 MHz
MEMORY BASE POPULATION	2/4 MB NOR flash
	8 MB SDRAM
PINS/FORM FACTOR	RJ-45 connector style with 20-pin micro pin header (Samtec FTS-110-01-F-DV-TR)
HIGH-SPEED TTL SERIAL INTERFACE	Up to 230 Kbps data rate; Full signal support for TXD, RXD, RTS, CTS, DTR, DSR and DCD; Hardware/Software flow control
GPIO	Up to 10 shared with 1 external IRQ
ON-MODULE POWER SUPERVISOR	Yes
JTAG INTERFACE	NET+OS development modules only
WAVE-SOLDERABLE DESIGN	No clean flux process
DIMENSIONS (L X W X H)	1.445 in (36.7 mm) x 0.75 in (19.05 mm) x 0.854 in (21.69 mm)

NETWORK INTERFACE - WIRED

STANDARD	IEEE 802.3
PHYSICAL LAYER	10/100Base-T
DATA RATE	10/100 Mbps (auto-sensing)
MODE	Full- or half-duplex (auto-sensing)
CONNECTOR	RJ-45
INTEGRATED ETHERNET MAC/PHY	Yes
POE POWER PASS-THROUGH	Yes (see website for available options)

ENVIRONMENTAL

OPERATING TEMPERATURE	-40° C to +85° C (-40° F to +185° F)
STORAGE TEMPERATURE	-50° C to +125° C (-58° F to +257° F)
RELATIVE HUMIDITY	5% to 90% (non-condensing)
ALTITUDE	12,000 feet (3,658 meters)

POWER REQUIREMENTS (3.3V)

MAXIMUM	270 mA (891 mW)
---------	-----------------

REGULATORY APPROVALS

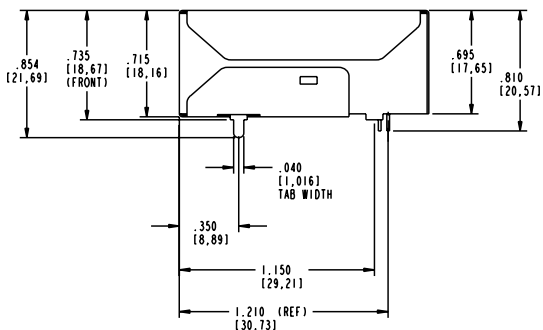
FCC PART 15 CLASS B, EN 55022 CLASS B	Yes
EN 61000-3-2 AND EN 61000-3-3	Yes
ICES-003 CLASS B, VCCI CLASS II, AS 3548	Yes
FCC PART 15 SUB C SECTION 15.247	Yes
IC RSS-210 ISSUE 5 SECTION 6.2.2(O)	Yes
EN 300 328, EN 301 489-17	Yes
UL 60950-1, EN 60950 (EU)	Yes
CSA C22.2, NO. 60950	Yes
EN 55024	Yes

WARRANTY

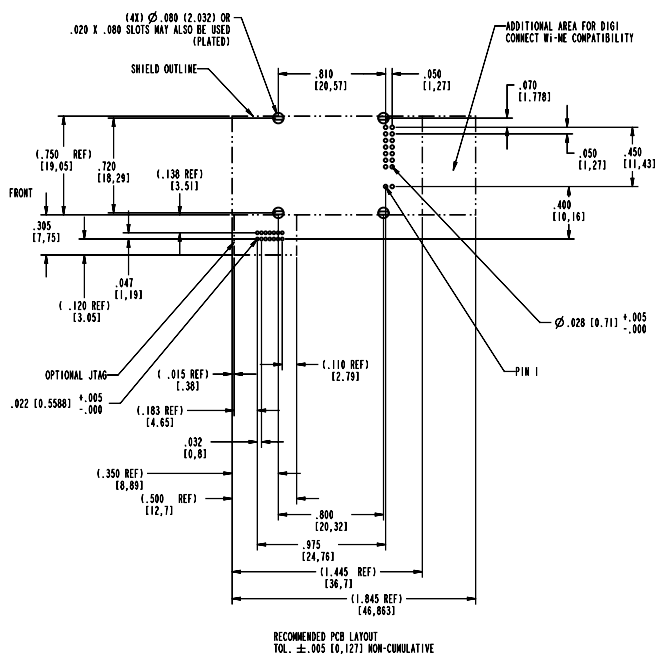
PRODUCT WARRANTY	3 year
------------------	--------

PRODUCT DIMENSIONS

Digi Connect ME® - Side



Recommended PCB Layout



PART NUMBERS	DESCRIPTION
MODULES FOR NET+OS	
DC-ME-01T-C	Digi Connect ME w/2 MB Flash, 8 MB RAM (single-unit pack)
DC-ME-01T-PC	Digi Connect ME w/2 MB Flash, 8 MB RAM, 802.3af compliant power pass-thru (single-unit pack)
DC-ME4-01T-C	Digi Connect ME w/4 MB Flash, 8 MB RAM (single-unit pack)
MODULES WITH PLUG-AND-PLAY FIRMWARE	
DC-ME-01T-PS	Digi Connect ME w/2 MB Flash, 8 MB RAM, 802.3af compliant power pass-thru (single-unit pack)
DC-ME-01T-S	Digi Connect ME w/2 MB Flash, 8 MB RAM (single-unit pack)
DC-ME4-01T-S	Digi Connect ME w/4 MB Flash, 8 MB RAM (single-unit pack)

DIGI SERVICE AND SUPPORT / You can purchase with confidence knowing that Digi is always available to serve you with expert technical support and our industry leading warranty. For detailed information visit www.digi.com/support.

© 1996-2019 Digi International Inc. All rights reserved.
All trademarks are the property of their respective owners.

91001258
F4/319

DIGI INTERNATIONAL WORLDWIDE HQ
877-912-3444 / 952-912-3444 / www.digi.com

DIGI INTERNATIONAL GERMANY
+49-89-540-428-0

DIGI INTERNATIONAL JAPAN
+81-3-5428-0261 / www.digi-intl.co.jp

DIGI INTERNATIONAL SINGAPORE
+65-6213-5380

DIGI INTERNATIONAL CHINA
+86-21-50492199 / www.digi.com.cn

